

# Operation instructions

Make your choice...

## M-605MHW Wireless Infrared touchless switch

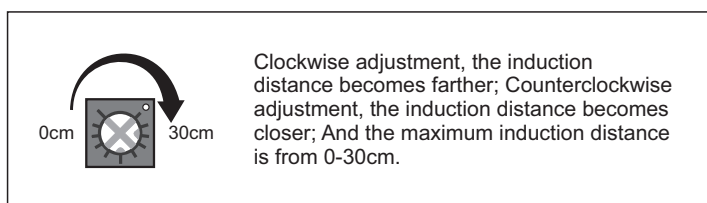
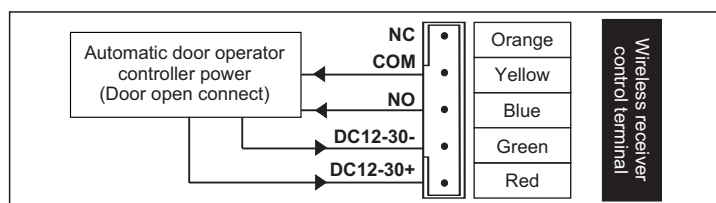
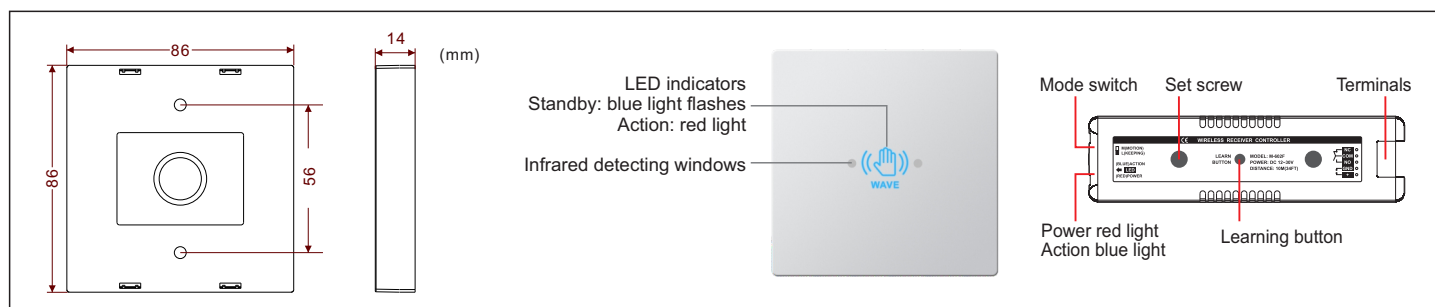


### 1 Safety Instruction



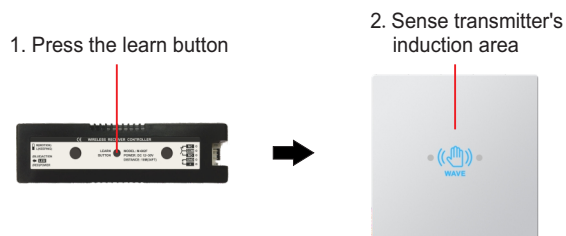
Thanks for your purchasing, please refer to the following before using.

### 2 Product Overview



### 3 Matching method

- This product is a self-learning code type, the transmitter code must be learned from this controller before use, can learn up to 20 transmitters.
- Learning method: Press the receiver's learning button and then release, the blue indicator light, enter the learning state, at this time, and then sense the transmitter, and the blue light of the receiver will flash twice, then you can learn successfully. After 5 seconds, it will automatically exit and return to the standby state.
- Deletion method: Press and hold the learning button for 5 seconds, the blue light flashes quickly, you can delete all the codes. (This product does not have a single deletion)



### 4 Output status selection

- ① **M** If the state selection switch is pulled to the M position, it is a jog output. Each time the transmitter senses, it will output a door opening signal of about 1.5S. Most receivers used with hand press switches are choose this mode.
- ② **L** If the status selection switch is pulled to the L position, it is a hold type output, and the output signal is kept. Each time the transmitter senses or touches, the output state will change once.

### 5 Parameters

Wireless receiver		Wireless transmitter	
Power supply:	DC12-30V	Power supply:	3V (2pcs 1.5V AAA battery)
Static current:	34mA(DC 12V power)	Standby current:	≤75μA
Action current:	62mA(DC 12V power)	Emission current:	12mA
Main contact capacity	1A DC 24V	Battery life:	200 times every day, 220 days
Contact holding time:	1.5 seconds	Induction distance	0-30 cm
Receiver sensitivity:	-95dbm	Emission distance:	more than 30 meters
External dimension:	110mm(L)x30mm(W)x15mm(H)	External dimension:	86mm(L)x86mm(W)x14mm(H)