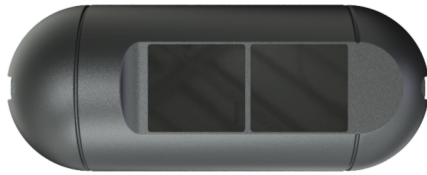


# Operation Instructions

Make your choice...

## M-901/901Q Laser safety sensor

M-901  
Exposed installation



M-901Q  
Concealed installation

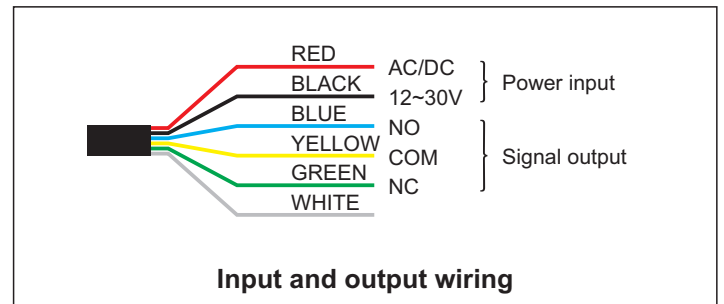
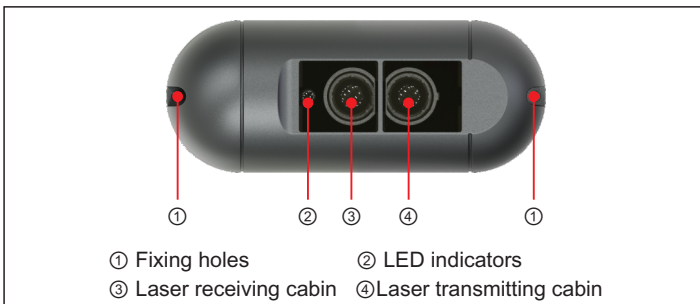


### 1 Safety Instructions



Thanks so much for your purchasing, please read this instruction before using

### 2 Product Overview And Wiring

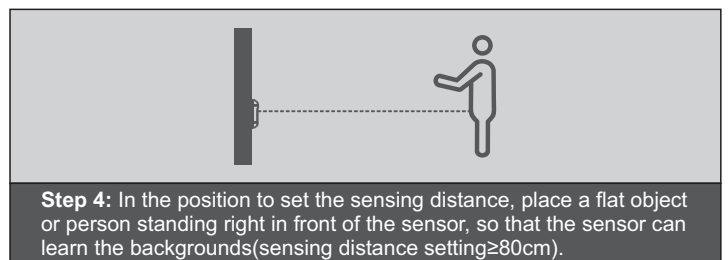
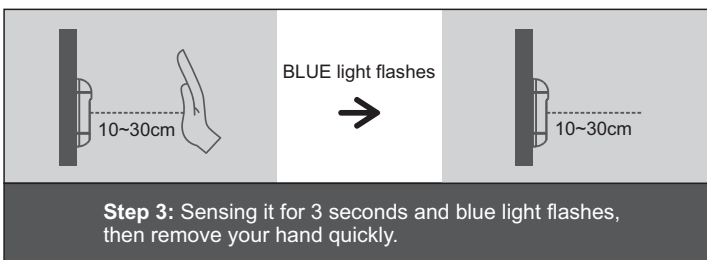
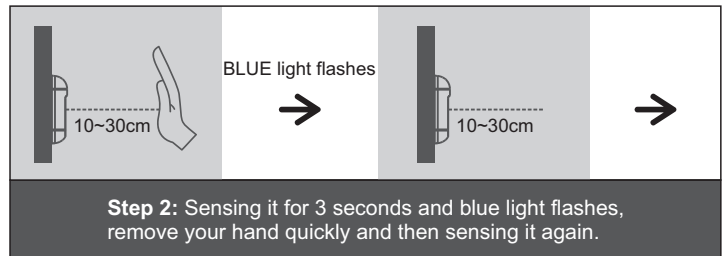
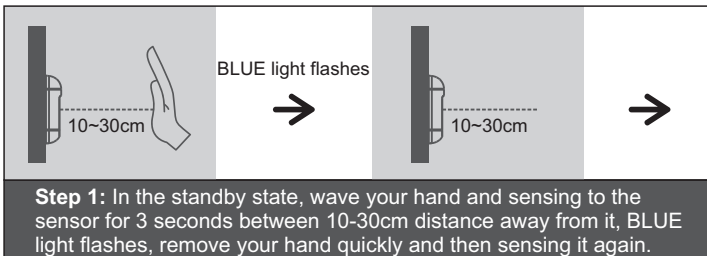


### 3 Installation and Debugging

Connect the power, the sensor makes "beep beep ..." sounds and BLUE light flashes quickly, it means that it's in the initial background learning state. When you hear a long beep sound, learning completed, BLUE light is always on, sensor entering into the standby state(When the sensor with background cut, it enters the standby state directly after power-on). When the sensor detects the presence of a human body or objects, RED light is on.

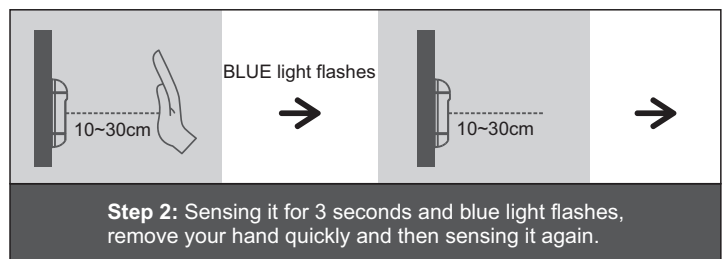
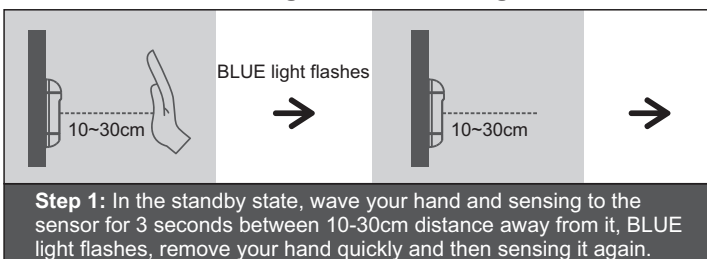
**NOTE: After power-on, complete the setting within 5 minutes. If not setting due to timeout, power off and power on again, then to setting.**

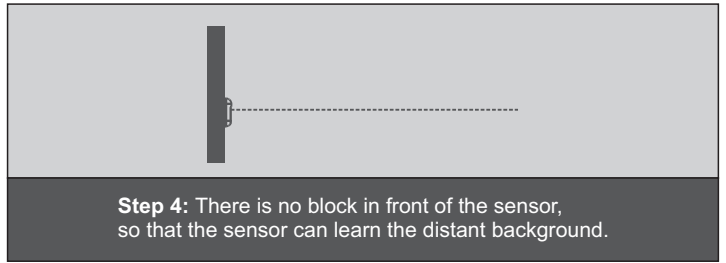
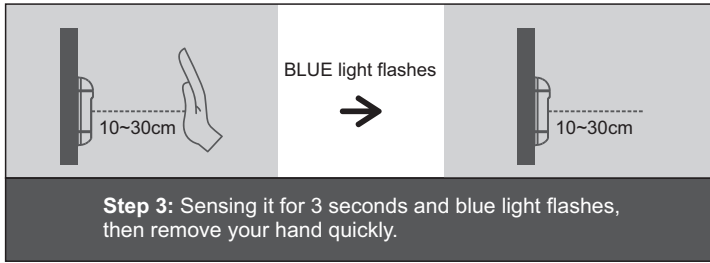
#### 3-1. Set the sensing distance



After learning completed, the sensor makes a long beep sound, BLUE light is always on, it means learning background is completed, and entering into the standby state.

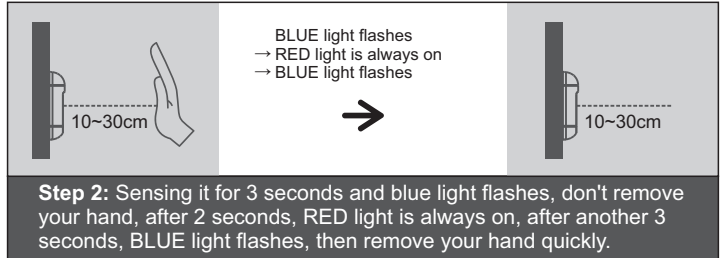
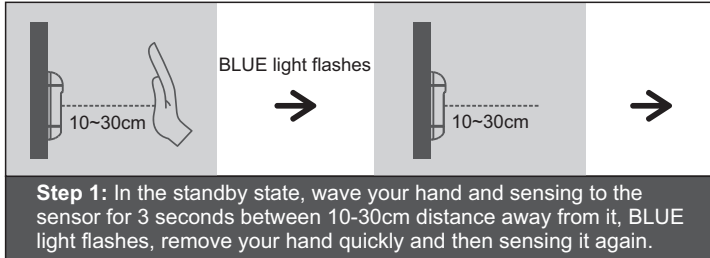
#### 3-2. Cancel the sensing distance setting





After learning completed, the sensor makes a long beep sound, BLUE light is always on, it means learning background is completed, and entering into the standby state.

### 3-3. Normal mode / Fast mode

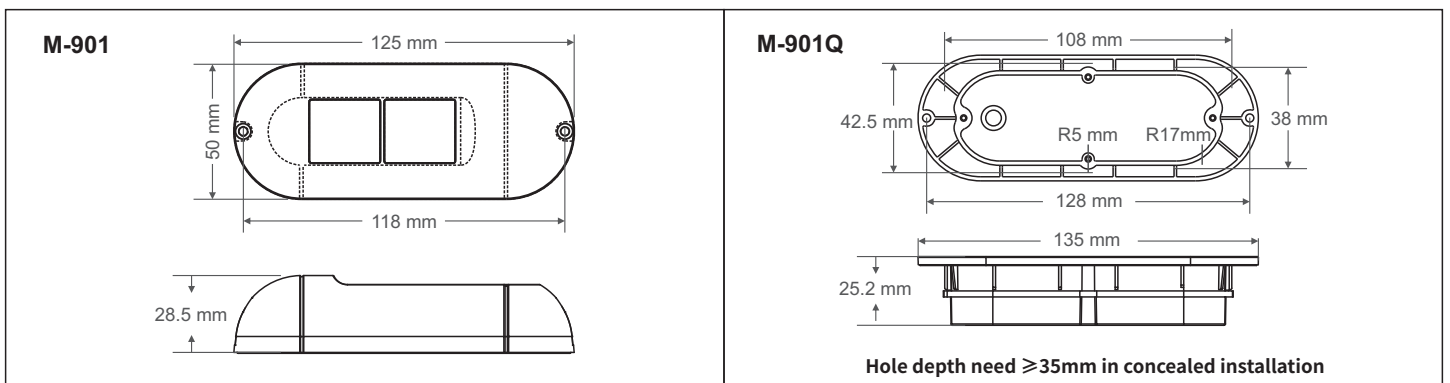


**The sensor emits short beep sounds, it means in the fast mode:**  
no frequency hopping function, can't be installed face to face, low rainproof effect, which is more suitable for indoor installation.  
**The sensor emits a long beep sounds, it means in the normal mode:**  
with frequency hopping function, can be installed face to face, rain protection effect is better.(factory default is normal mode)

## 4 Trouble shooting

Symbol	Cause	Method
Indicator light don't work	Unconnect the power	Check the power supply and wiring
Indicator light is normal, but door can't be opened or opposite state	NO/NC signal are connected incorrectly	Reconnect the signal cable correctly
Power on and after learning background, RED indicator is always on	Set the sensing distance, and far than current distance	Cancel the sensing distance setting
Sensing distance is too near	Inductive distance cutting has been set	Reset the sensing distance cutting

## 5 Dimension



## 6 Technical Parameter

Detection principle: Time of Flight (TOF)	Working temperature: -20°C~60°C
Light medium: 890nm infrared laser	Working voltage: AC/DC 12-30V
Laser category: Class I eye-safe laser	Standby current: 25mA(12V power)
Detection diameter: 100mm light spots(2.8meters height)	Action current: 45mA(12V power)
Detection reaction time: $\leq 100$ ms	Signal output: Relay NO or NC
Max detection distance: 10 meters	Trigger mode: Moving or stationary
Min cutting distance setting: 80cm	Function instruction: LED indicator, standby: BLUE, detection: RED
Waterproof grade: IP67	Shell material: ABS, PC

## 7 Packing List

Sensor \*1, Screw bag \*1, Manual \*1