

Operation Instruction

M-237 Infrared Detector

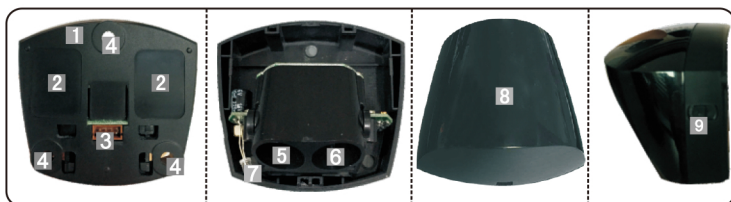
Make your choice.....



1 Safety Instruction

! Thank you for buying this product. Please read this manual before installation.

2 The overall structure parts

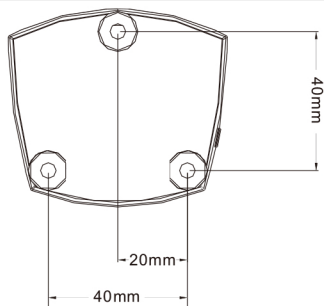


- 1** bottom cap
- 2** Wiring label×2
- 3** connector socket
- 4** Mounting screw holes×3
- 5** emitter
- 6** receiver
- 7** indicator light
- 8** Filter (cover)
- 9** Function Dial switch

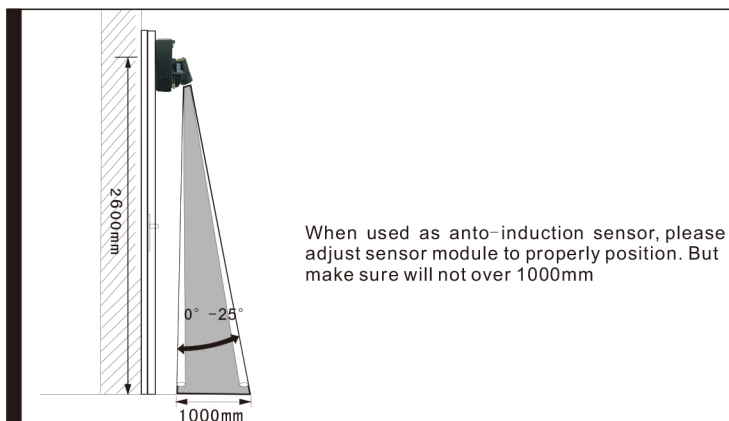
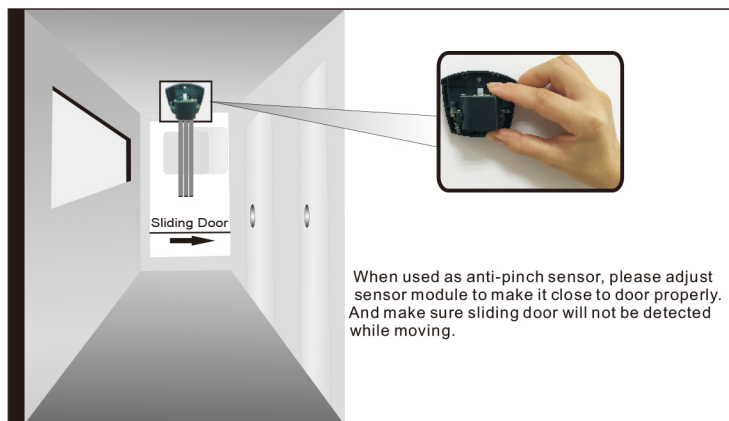
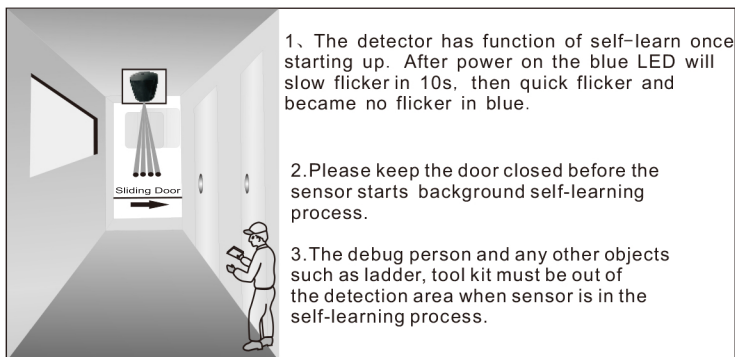
3 The overall quality

- One-piece cover design, beautiful, dustproof, easy fixed and installation.
- Can be used in supermarkets, stores, and various kinds of automatic door which pedestrian pass through frequently. can be used as Human existence detection in small space. Also has auto-induction and anti-pinch function.
- one way to emit ,one way to receive, intelligent adaptive infrared sensors.
- Induction area and Angle can be adjusted.
- Always self-correcting once be influenced by quake, distortion, move, dark and sunshine. Ensure the sensor can work durable.

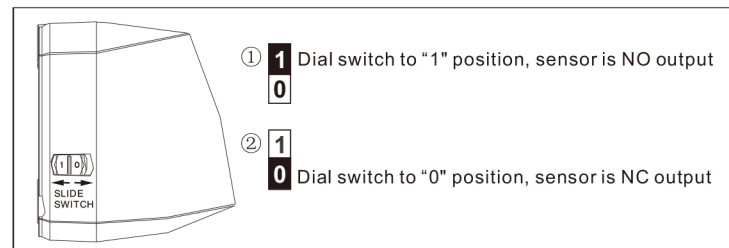
4 Installation Dimension



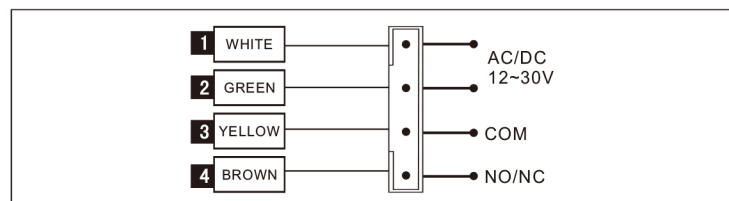
5 Installation and adjustment



6 Function setting



7 Input and Output



8 Parameters

Power Supply:	AC/DC12~24V
Quiescent current:	11mA (12V)
Dynamic current:	46mA(12V)
Working temps:	-20℃+60℃
Sensing method:	Infrared scanning
Scanning area:	100×80mm
Detection distance (MAX):	1000mm
Installation height:	≤2600mm
Dimension:	63 (L) ×57 (W) ×52 (H) mm