

Operating Instructions

M-225E Password and car Visual access control interphone

Make your choice.....

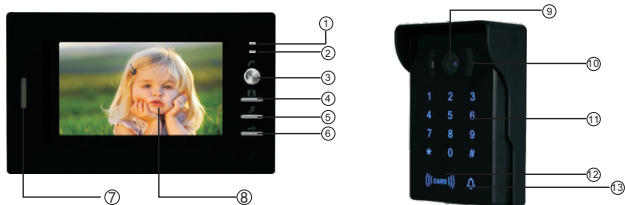


1 Safety Instruction



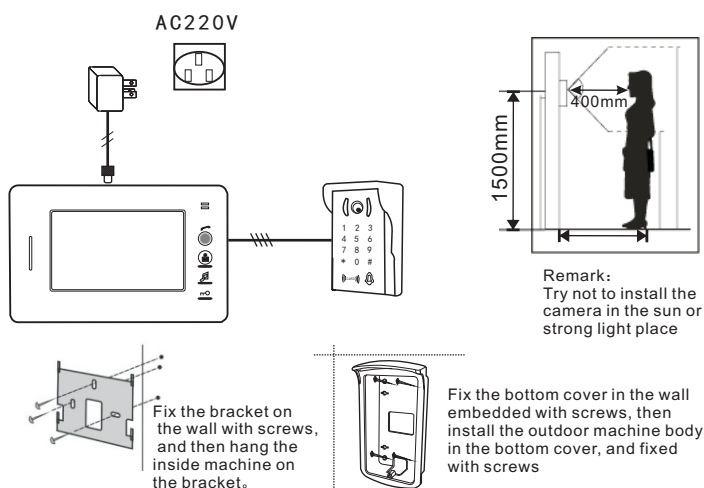
This device must be used with a safety insulated low voltage and protection, and all adjustment and maintenance work must be carried out by professional engineering installers

2 Integral structure and components



- | | | | |
|-------------------|----------------|---------------|------------------|
| ① Power indicator | ④ Intercom | ⑦ Mic | ⑩ Infrared light |
| ② Two supports | ⑤ ringing tone | ⑧ LCD display | ⑪ Password panel |
| ③ one indicator | ⑥ choice | ⑨ Camera | ⑫ Card area |
| | ⑬ Unlock | | ⑬ Ring button |

3 Install model



4 Character

- 7 inch HD LCD display
- Card and password unlock, intercom, outdoor monitor, indoor intercom, rest time no disturbance, and indoor unlock
- LCD brightness, chroma and Volume adjustable
- Indoor unit thin design, Acrylic panel, Plating button show luxurious style .
- A lot of CRBT for your choice.
- Outdoor unit is durable with Night Vision, Embedded or wall mounted installation
- The effective distance is up to 200 meters

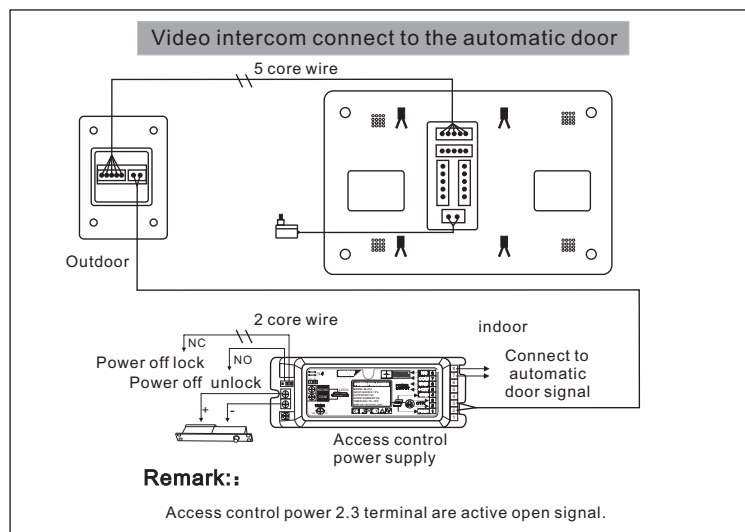
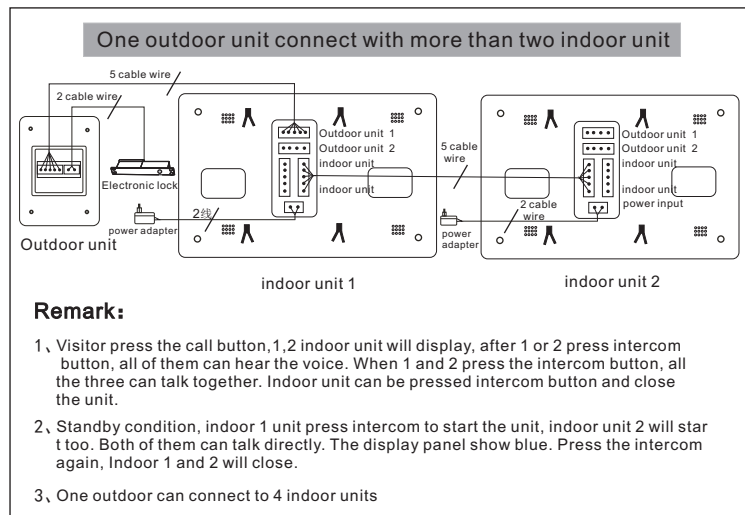
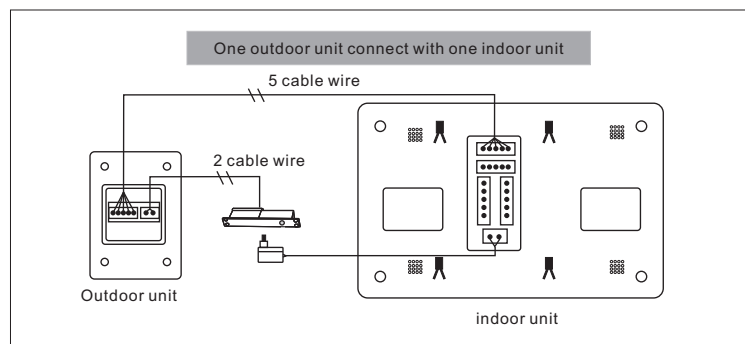
5 Indoor unit and outdoor unit operation instruction

- Visitor press the call button, the indoor unit will display the photo of the visitor. Master press the intercom button and then they can talk. The time of intercom is about 120s
- Press the unlock button indoor, the electronic lock will open.
- Press the monitor button indoor, you can monitoring the outdoor for 40s every time
- Press the monitor button again, monitor will close.
- Under monitoring condition, you can choose the CRTB freely
- Indoor and outdoor unit talking, monitoring and unlock can be operated separately
- CRTB setting OK, It will be the default setting after cutting power
- Outdoor sound will spared to indoor during monitoring, but indoor sound will not spared to outdoor

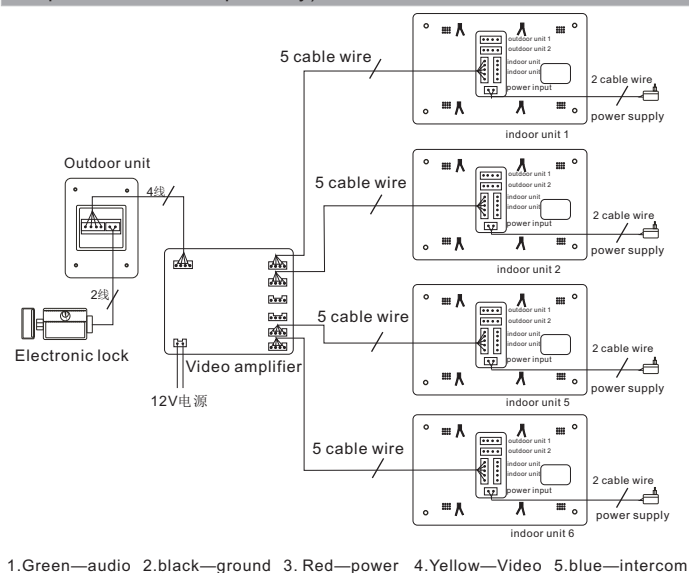
6 Connection instruction

Wiring marking:

- | | |
|-----------------------|--|
| Red: monitoring cable | Yellow: video cable |
| Black: Ground | Blue: (Indoor and outdoor connect cable) Power cable |
| Green: Audio line | Blue: (Indoor and outdoor connect cable) Indoor intercom cable |



Video amplifier (max 6 indoor units) (You need to buy Video amplifier from us separately)

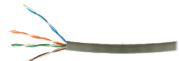


7 Cable choice suggestion:

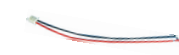


RVV4 × 0.3/RVV5 × 0.3

(National standard cable, not suggest thicker cable)



National standard super 5 type network cable(suggestion)



Electronic cable or power cable

(Remark: When wiring, they can not be with strong the same line pipe, at least 50 centimeters away)

8 Function introduction:

No disturbance function:

Press the intercom button for 2s during the standby time, indoor unit will display the outdoor photo but no rings.

The outdoor unit voice will not be spared to indoor unit. If master do not operate the indoor unit, it will be no disturbance 40s later. If master press intercom button, indoor and outdoor can talk. 120s after the intercom, it will be no disturbance again if master do not operate it. If master press the intercom or monitor button again, the indoor unit will close, And it turn no disturbance to ordinary condition (red light Twinkle show no disturbance condition, no twinkle show ordinary conition)

Card reader function:

Add new user

Read Add administrator card, green light twinkle, read the card you want to add, then read the add administrator card again to finish the operation. Add card succeed.

Cancel the card user:

Read the cancel administrator card you, red light twinkling, read the cancel card first and then read the cancel administrator card again, Cancel the administrator card succeed.

Cancel all the card

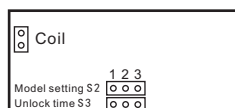
If you lose one of the card, cancel all the card and add card again is a good way to avoid dangerous: Read the cancel administrator card, red light twinkling, then read add administrator card, and read cancel administrator again. 5s later the red light will be on always. Cancel all the cards succeed. At last add card step by step

Add administrator card: (there are 2 cards follow with the products. Follow below steps if you lose any one)Open the outdoor unit, cut down the power and connect the S2 on read panel to 1,2 terminal, turn on the power, red/green light Alternate twinkling, read two cards continuously, green light twinkling, add card succeed, (the first card is add administrator card, the second is the cancel administrator card.)



Matching management card: ADD
DELETE
USER

Administrator add card
Administrator cancel card
User card



S3 Unlock time 1S
S3 Unlock time 5S
S2 Administrator setting model
S2 Ordinary work model

Add user card steps:



9 Common faults

Fault phenomenon	Fault reason	Solutions
Screen black	Not start or power connection wrong	Check the device is open and the power supply is OK
Screen blue	1.5core wire connect to outdoor 2 2.Press the indoor monitor button more than 3s	1.Connect the 5 core wire the the outdoor 1 2.Press the monitor button 1s is OK
Photo is not clear	Brightness is too low	Adjust the brightness to the right level
Can not unlock	Electronic wire not connect well or the cable is too long or too thin to connect indoor unit and outdoor unit	Check the connection and try to choose thick wire
Call with no ring	Volume is too low or the connect is not well	Adjust the volume to right level or keep the connection OK
Outdoor call without effect	Volume is too low or the connect is not well	Keep the cable connection is OK
Ring and start when power on	Connection is not well	Check the connect cable (with color order)
Image interference	Connect cable is too long or too thin	Choose the thick wire connection
Warning sound Only Y6 support	Outdoor and rain proof cover	Outdoor Coincide with rain proof cover

10 Main technology data

Indoor data:	
Display:	7 inch (16: 9)
Resolution:	digital800*3(RGB)*480/ simulation 480*3
Call sensitivity:	56db
Input voltage:	AC100V-240V~50Hz/60Hz
Power adapter:	DC15V 1200mA
Intercom time:	120S±10%
Monitoring time:	40S±10%
Effective distance:	200m (4×0.75mm²)
Consumption:	≤6W (400mA)
Standby consumption:	<1.1W
Dimension:	225 (W) ×146 (H) ×20 (D) mm
Outdoor data:	
Infrared distance:	about 4m
Input voltage:	DC15V
Camera:	HD colorful CMOS/CCD(optional)
Install method:	embedded or wall mounted
Photo transfer distance:	about 200 m
Dimension:	90 (W) ×142 (H) ×37 (D) mm