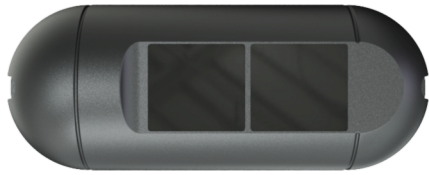


Operation Instructions

Make your choice...

M-901E/901QE Laser safety sensor



M901E Exposed installation



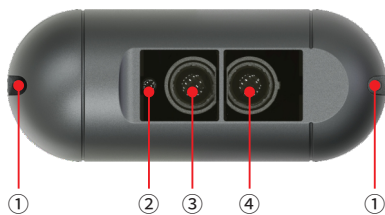
M901QE Concealed installation

1 Safety Instructions

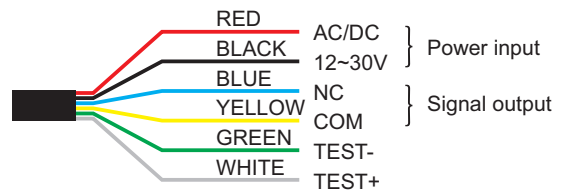


Thanks so much for your purchasing, please read this instruction before using

2 Product Overview And Wiring



- ① Fixing holes
- ② LED indicators
- ③ Laser receiving cabin
- ④ Laser transmitting cabin



Input and output wiring

3 Installation and Debugging

Connect the power, the sensor makes "beep beep ..." sounds and BLUE light flashes quickly, it means that it's in the initial background learning state. When you hear a long beep sound, learning completed, BLUE light is always on, sensor entering into the standby state. When the sensor detects the presence of a human body or objects, RED light is on.

NOTE: After power-on, complete the setting within 5 minutes. If not setting due to timeout, power off and power on again, then to setting.

3-1. Set the sensing distance

Step 1: In the standby state, wave your hand and sensing to the sensor for 3 seconds between 10-30cm distance away from it, BLUE light flashes, remove your hand quickly and then sensing it again.

Step 2: Sensing it for 3 seconds and blue light flashes, remove your hand quickly and then sensing it again.

Step 3: Sensing it for 3 seconds and blue light flashes, then remove your hand quickly.

Step 4: In the position to set the sensing distance, place a flat object or person standing right in front of the sensor, so that the sensor can learn the backgrounds(sensing distance setting $\geq 80\text{cm}$).

After learning completed, the sensor makes a long beep sound, BLUE light is always on, it means learning background is completed, and entering into the standby state.

3-2. Cancel the sensing distance setting

<p>Step 1: In the standby state, wave your hand and sensing to the sensor for 3 seconds between 10-30cm distance away from it, BLUE light flashes, remove your hand quickly and then sensing it again.</p>	<p>Step 2: Sensing it for 3 seconds and blue light flashes, remove your hand quickly and then sensing it again.</p>
<p>Step 3: Sensing it for 3 seconds and blue light flashes, then remove your hand quickly.</p>	<p>Step 4: There is no block in front of the sensor, so that the sensor can learn the distant background.</p>

After learning completed, the sensor makes a long beep sound, BLUE light is always on, it means learning background is completed, and entering into the standby state.

3-3. Open/close rain-proof mode

<p>Step 1: In the standby state, wave your hand and sensing to the sensor for 3 seconds between 10-30cm distance away from it, BLUE light flashes, remove your hand quickly and then sensing it again.</p>	<p>Step 2: Sensing it for 3 seconds and blue light flashes, don't remove your hand, after 2 seconds, RED light is always on, after another 3 seconds, BLUE light flashes, then remove your hand quickly.</p>

The sensor makes short "beep" sounds, it means open the rain-proof mode; or one long "beep" sound, it means close the rain-proof mode.

3-4. NO/NC output setting

<p>STEP 1: In standby state, wave your hand to sense for about 3 seconds at a position 10-30cm in front of the sensor.</p>	<p>STEP 2: After BLUE light flashes and remove your hand, then quick sensing twice within 5 seconds.</p>	<p>STEP 3: Sensing it for 3 seconds again.</p>

When the sensor with the continuous short beep, it is NO output, or with one long beep, it is NC output.

3-5. TEST signal output setting

<p>STEP 1: In standby state, wave your hand to sense for about 3 seconds at a position 10-30cm in front of the sensor.</p>	<p>STEP 2: After BLUE light flashes and remove your hand, then quick sensing 5 times within 5 seconds.</p>	<p>STEP 3: Sensing it for 3 seconds again.</p>

When the sensor with the continuous short beep, it is low input active, or with one long beep, is is high input active.

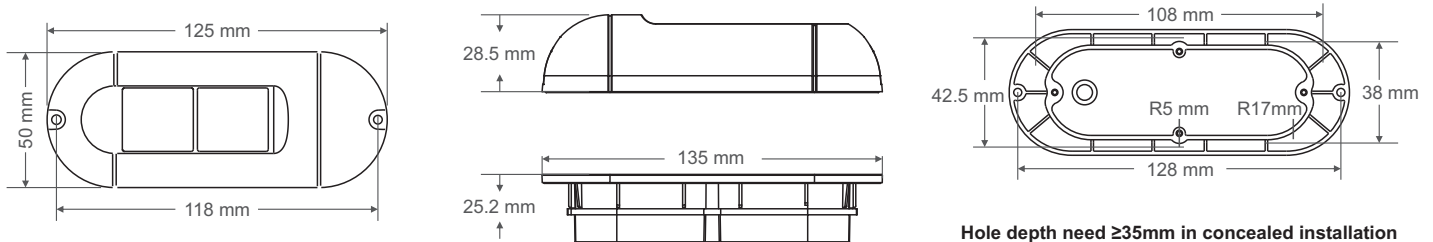


NOTE: When the test signal function is not used, it must be set in the high input active state, otherwise the sensor will not work normally.

4 Trouble shooting

Symbol	Cause	Method
Indicator light don't work	Unconnect the power	Check the power supply and wiring
Indicator light is nomal, but door can't be opened or opposite state	NO/NC signal are connected incorrectly	Reconnect the signal cable correctly
Power on and after learning background, RED indicator is always on	Set the sensing distance, and far than current distance	Cancel the sensing distance setting
Sensing distance is too near	Inductive distance cutting has been set	Reset the sensing distance cutting

5 Dimension



6 Technical Parameter

Detection principle: Time of Flight (TOF)	Working temperature: -20°C~60°C
Light medium: 890nm infrared laser	Working voltage: AC/DC 12-30V
Laser category: Class I eye-safe laser	Standby current: 52mA(12V power)
Detection diameter: 100mm light spots(2.8meters height)	Action current: 74mA(12V power)
Detection reaction time: ≤ 50 ms	Signal output: Relay NO or NC
Max detection distance: 10 meters	Trigger mode: Moving or stationary
Min cutting distance setting: 80cm	Function instruction: LED indicator, standby: BLUE, detection: RED
Waterproof grade: IP67	Shell material: ABS, PC

7 Packing List

NO.	NAME	QUANTITY	REMARK
1	Sensor	1 pc	
2	Screw bag	1 bag	
3	Manual	1 pc	