

# Operation Instructions

Make your choice...

## M-505BW Wireless Large Non-touch Switch

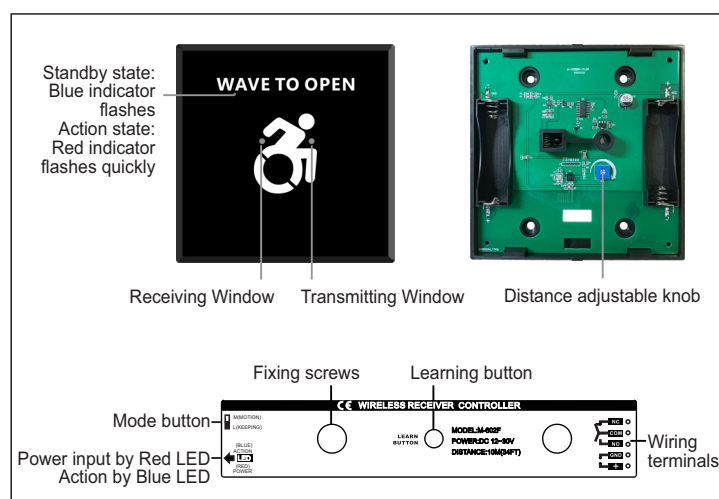


### 1 Safety Instructions

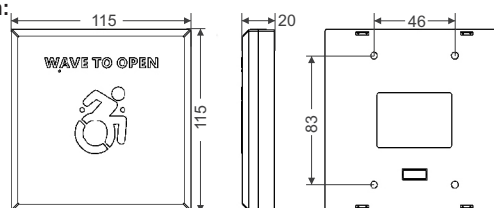


Thank you very much for your purchasing, in order to use this product correctly, please read this manual before using it.

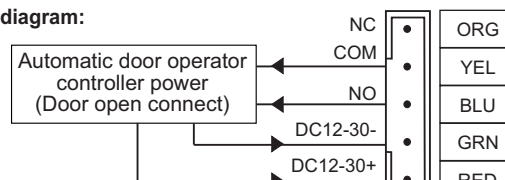
### 2 Product Overview



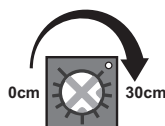
#### Dimension:



#### Wiring diagram:



### 3 Sensing distance adjustment and match method



Clockwise direction adjustment, distance becomes more far, counterclockwise direction adjustment, distance becomes more near. The max sensing distance is 30cm.

The first step: Press the learning button



The second step: Wave your hand to the sensing area of the transmitter

- This product is self-learning code type, the transmitter code must be learned to this controller before use, can learn up to 20 transmitters.
- Learning method: Press the receiver's learning button, the blue indicator is on, enter the learning state. At this time, wave the transmitter, the blue indicator of the receiver will flash three times, then learning successfully. After 5 seconds, it will automatically return to the standby state.
- Delete method: Press and hold the learning button for 5 seconds, the blue light flashes quickly, all codes will be deleted. (Every code can't be deleted individually)

### 4 Output state selection

- ① M ☒ If in the M position, it is inching output. Each time the transmitter senses, it will output a door opening signal of about 1.5S.  
L ☐ Most choose this mode.
- ② M ☐ If in the L position, it is holding output, the output signal is kept. Each time the transmitter senses, the output state will change once.  
L ☒

### 5 Technical Parameter

Wireless receiver		Power supply:	3V(2pcs 1.5V AA batteries)
Power supply:	AC/DC 12-30V	Standby current:	≤80μA
Static current:	34mA (DC 12V power)	Transmitting current:	10mA
Action current:	62mA (DC 12V power)	Batteries life:	200 times everyday, about 450 days
Relay connect capacity:	1A DC24V	Receiver sensitivity:	-95dbm
Connect holding time:	1.5 seconds	Sensing distance:	0-30 cm
Dimension:	110(L)x30(W)x15(H)mm	Launch distance:	about 30 meters
Transmitter		Dimension:	115(L)x115(W)x20(H)mm

Packing list: Switch\*1, Receiver\*1, 5-Pin cable\*1, Instructions\*1, Screws bag\*1