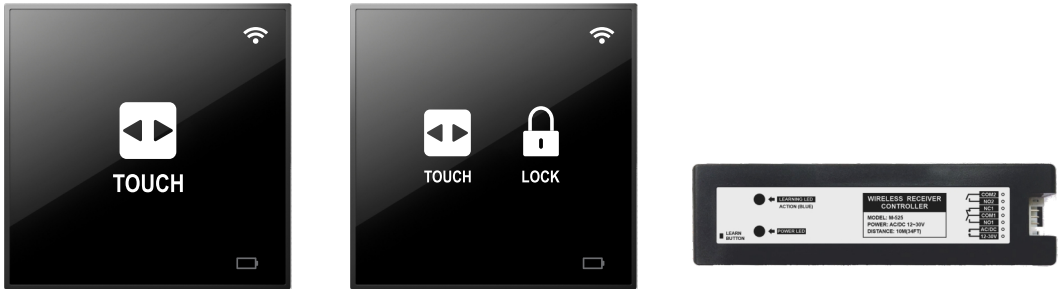



Operation Instructions

Make your choice...

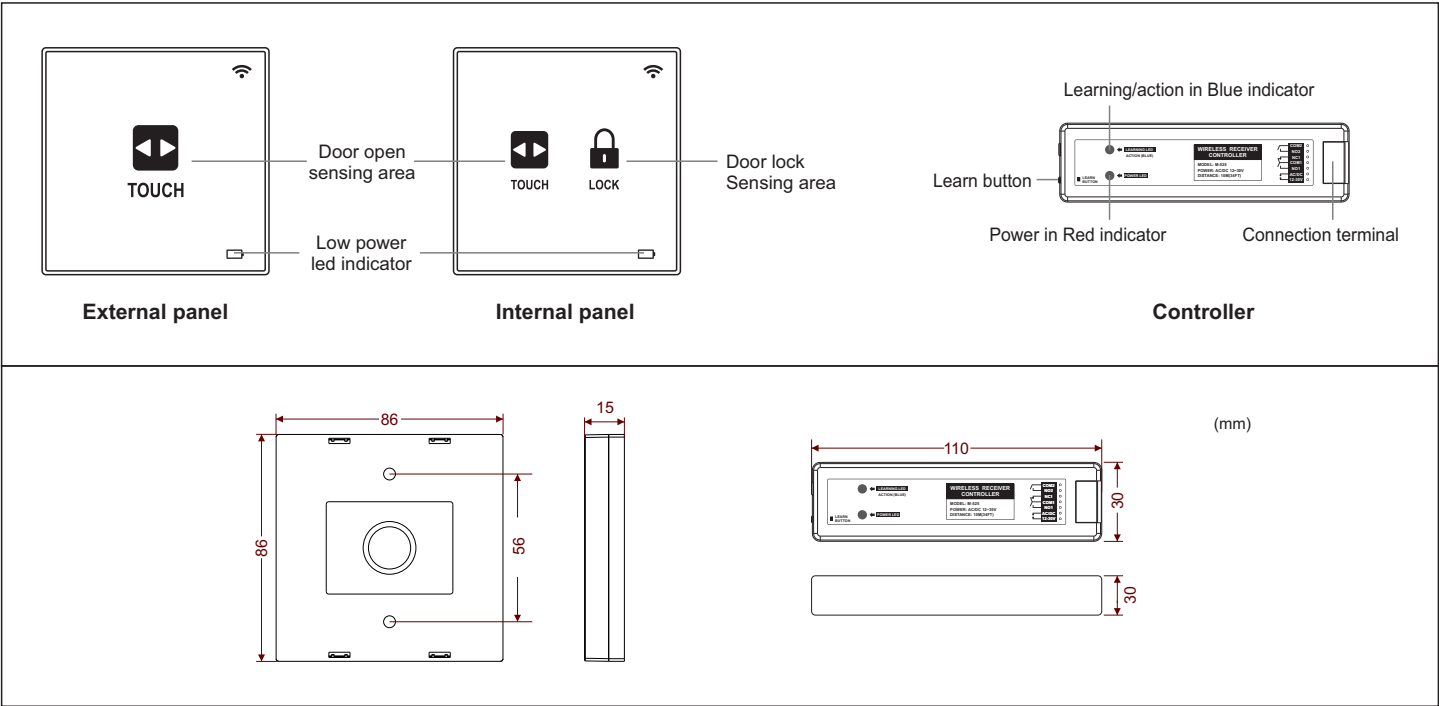
M-525 Wireless Touch Locked Switch Kit



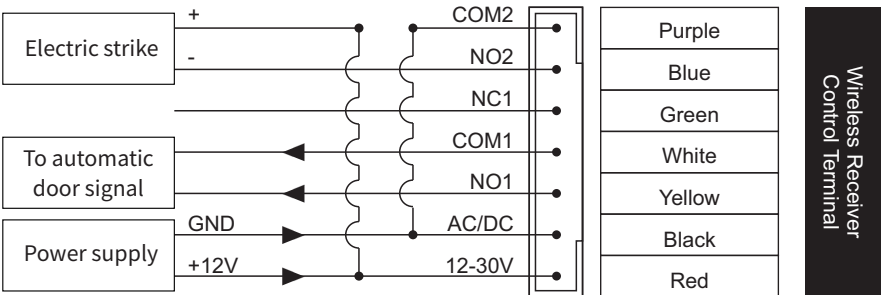
1 Safety Instruction

 Thank you very much for purchasing this product, in order to use it correctly, please read this manual instruction carefully before use.

2 Product Overview



3 Wiring Definition



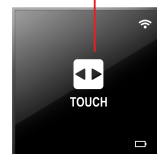
4 Paring Method

- This product with self-learning code design, the transmitter code must be learned into the controller before use it. Up to 20pcs transmitters can be learned.
- Learning method: Press the receiver's learning button, blue indicator light is always on, enter the learning state, within 5 seconds, press the panel's sensing area, Blue indicator light of receiver flashes, it means learning successful.
- Delete method: Press and hold the learning button for 3 seconds, Blue indicator light flashes quickly, all codes are deleted. (can't delete the individual code)

Step 1:
Press the learning button



Step 2: Press the external/ internal panel's door open sensing area



5 State Description

1. Press the external/internal panel's door open sensing area, door open sensing area's Green indicator light is on, press the door lock sensing area, door lock sensing area's Red indicator light is on.
2. When the door is unlocked
 - 1) Press the external/internal panel's door open sensing area, the receiver outputs the door opening signal.
 - 2) Press and hold the external/internal panel's door open sensing area for 3 seconds, Green indicator light flashes, the receiver outputs the NO signal, door is in the Normally Open state.
3. When the door is locked
 - 1) Press the internal panel's door open sensing area, the receiver outputs the door opening signal.
 - 2) Press and hold the internal panel's door open sensing area for 3 seconds, Green indicator light flashes, the receiver outputs the NO signal, door is in the Normally Open state.
 - 3) Press or hold the external panel's door open sensing area less than 12 seconds, Red indicator light flashes, door is in the locked state.
 - 4) Press and hold the external panel's door open sensing area for 12 seconds, Red indicator light is always on, forcibly unlocked.
4. Low power alarm
When the batteries power is low, Red indicator light flashes.
5. Unpaired
If the panel and receiver are not paired, press the panel's sensing area, and the receiver's indicator flashes with no signal output.

6 Technical Parameters

Wireless receiver	Transmitter
Power supply: AC/DC12~30V	Power supply: 3V(1.5V dry batteries*2pcs)
Static current: 33mA(DC12V)	Standby current: ≤5μA
Action current: 110mA(DC12V)	Emission current: 12mA
Main contact capacity: 1A 24VDC	Battery life: 200 times/day, use 220 days
Contact suction holding time: 1.5 seconds	Emission distance: over 30 meters in no obstacles area
Sensitivity: -95dbm	Product size: 86(L)x86(W)x15(H)mm
Product size: 110(L)x30(W)x15(H)mm	

7 Packing List

NO.	Name	PCS	REMARK
1	Internal panel	1	
2	External panel	1	
3	Receiver	1	
4	AAA batteries	4	165mm
5	7-PIN cable	1	
6	3M tapes	3	
7	Screw bag	1	