

# Operation Instruction

## M-202X Wireless Touch Switch



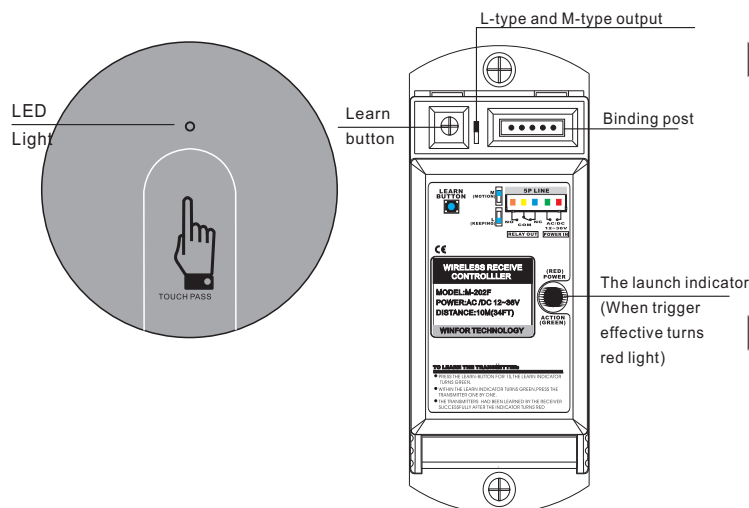
### 1 Safety Instruction

Thank you for your purchasing, please refer to the following before using.

### 2 Over-all Characteristic

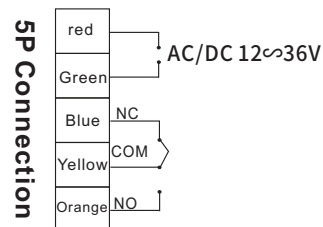
- ADOPT uniformity frequency, high stability of wireless signal receiving and sending
- Siludification of PU varnished shell, dapper appearance with anti-off screw
- Operation frequency 315M, stability better than 10-5.
- Panel pushing with low-power consumption, long service life battery.
- Three point of trigger pressing design to ensure the effective action.
- With large capacity output, available to be used with autodoor, electric lock and access controller
- Door open within 2s when signal received.
- Wide voltage input of AC/DC 12-36V
- Function switch with voice indicator, power indicator turns green to confirm the

### 3 Product Over-view

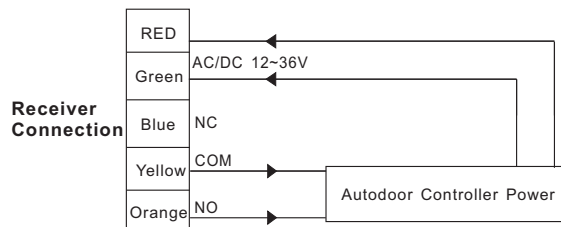


- This product is with the function of coding self-learn. Make sure the code of remote transmitter has been learned into the receiver before using (16 kinds of codes can be learned).
- Operation way: Press the learned button for 1S, indicator turns green. Press any key of the remote transmitter. The transmitter has been learned by the receiver successfully with two flashes of green light appears.
- Delete method: Press the learn button for 5S, turns to green light, all the codes has been deleted successfully (Can not delete one by one).
- Switch off power when switching the function of L-type and M-type.
- Otherwise, the receiver maintains the previous state.

### 4 Output & Input



### 5 Wiring Connection on Receiver



Connection with automatic door operator

### 6 Output state

- ① **M** **Point mode: switch to M**  
**L** – With about 2s signal to open the door when push the panel Work with receiver.
- ② **M** **Keeping mode: switch to L**  
**L** – Output signal is keeping. Push the panel to changeover the state.

### 7 NOTE

Open front cover, and take out yellow paper before using.

### 8 Technical Parameter

Power supply (wireless receiver)	AC/DC 12~36V
Quiescent current	15mA
Working current :	80mA (DC 12V power supply)
Relay contact capacity (Wireless receiver)	20A 14VDC
Snap action contact holding time (wireless receiver)	2s
Power supply (transmitter)	12V 2 batteries, parallel operation
transmitter current :	3.9mA
Battery life (transmitter) :	200/day, 300days
Transceiver distance	Rely on practical condition. Can reach beyond 5m in normal case.
Dimension(transmitter) :	89mm (diameter) × 10mm (thickness)
Dimension (receiver) :	123mm (L) × 50mm (W) × 32mm (H)