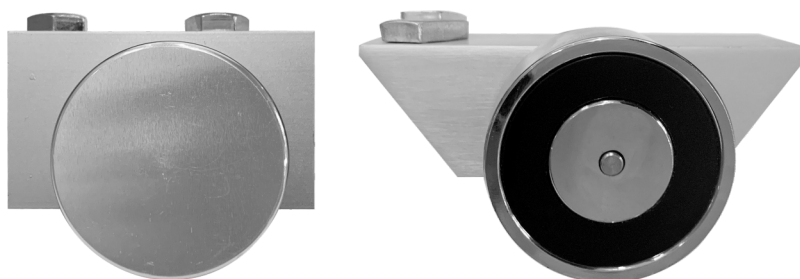


Operation Instructions

Make your choice...

M-213D Magnetic Lock For Automatic Door



1 Safety Instruction

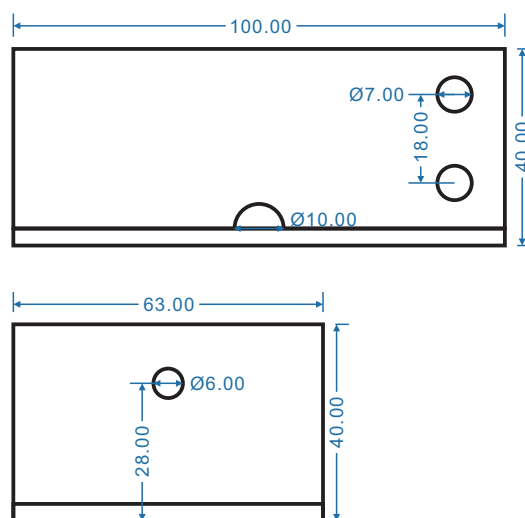
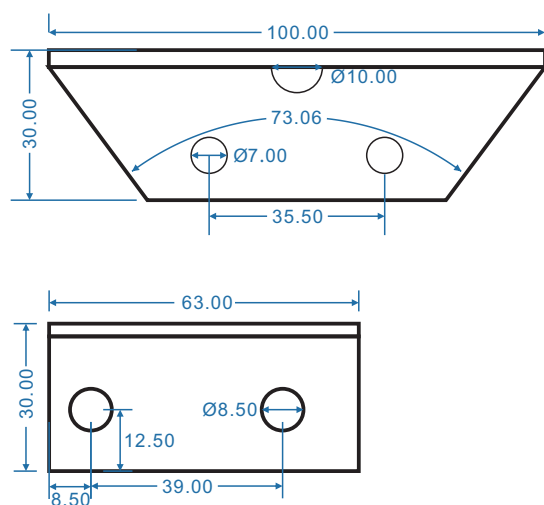


Thank you very much for purchasing this product. In order to use this product correctly, please read this operation manual carefully before using it.

2 Overall Characteristics

- It is equipped with automatic door access control system, can install to the various automatic doors in any occasions.
- Designed for automatic door access control lock function, and equipped with automatic door guide rail special fixed bracket.
- Small size, easy to install, and used with automatic door open and close function with good.

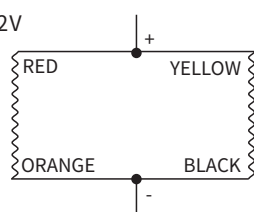
3 Product Overview



(mm)

Wiring:

DC12V



DC24V



4 Parameter

Input voltage:	12DC (DC 24V can be selected)	Operating temperature:	-20~55°C
Working current:	12V/174mA 24V / 87mA	Operating humidity:	0~90%
Tension force:	60Kg(130Lbs)straight tension	Lock body part:	Lock body part: $\varnothing 50 \times 35(H)$ mm
Surface process:	Chromium plating process	Lock magnetic part:	Lock magnetic part: $\varnothing 50 \times 9(H)$ mm